

CAT BOM - Bill of Material

PLM INNOVATION

Create a bill of material based on your - company's templates

The BOM creation belongs to the most important processes in a manufacturing company. CATBOM enables you to create a bill of material in a simple way. At the end of the process you will get a BOM, which is free of errors.

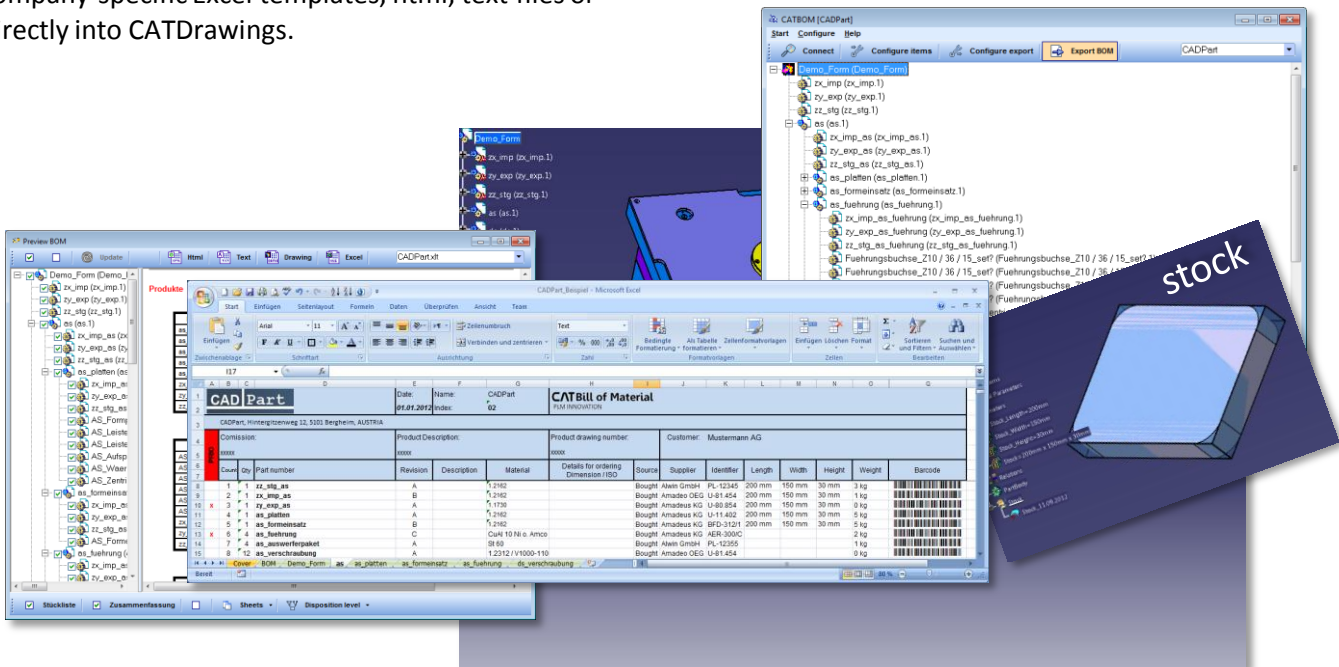
CATBOM allows you to create an automated export of structures from CATIA. User defined properties or parameters can be predefined in company-specific templates. These templates must be filled with values either with CATBOM or directly in CATIA. The input is supported by lists of values (pull down), inheritance and some more important functions. CATBOM works bidirectional with CATIA.

In addition to the conventional product-part structures of CATIA are also parts-bodies structures possible.

If you have filled in the values, a powerful preview function shows you missing or erroneous entries. The BOM output can be created in freely definable company-specific Excel templates, html, text files or directly into CATDrawings.

The most important functions of CATBOM

- *Bill of materials , recapitulations*
- Based on products and parts, but also bodies or geometrical sets
- *Anyone company excel templates*
- *Export to excel, text, csv, html, drawing*
- *Finding of stock dimensions and technical properties like weight , ...*
- *Using of formulas, rules and list of values*
- *Linking to CATIA material catalog*
- *Bi-directional filling of values*



Administration's functions:

- Predefine BOM templates
- Free positioning of fields in Excel templates (.xlt, .xltx)
- Support of Excel templates with company logos, headers and footers
- Setting a fixed field length for formatted textual output (ERP- Systems)

User's functions:

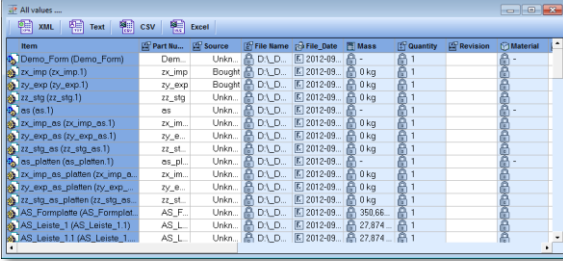
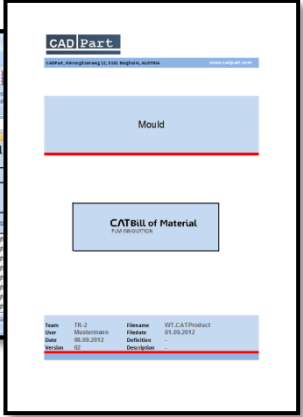
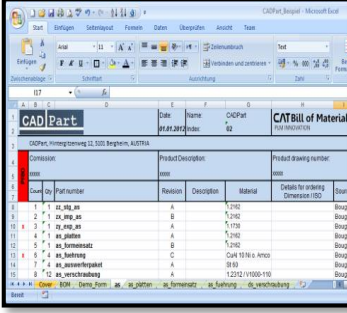
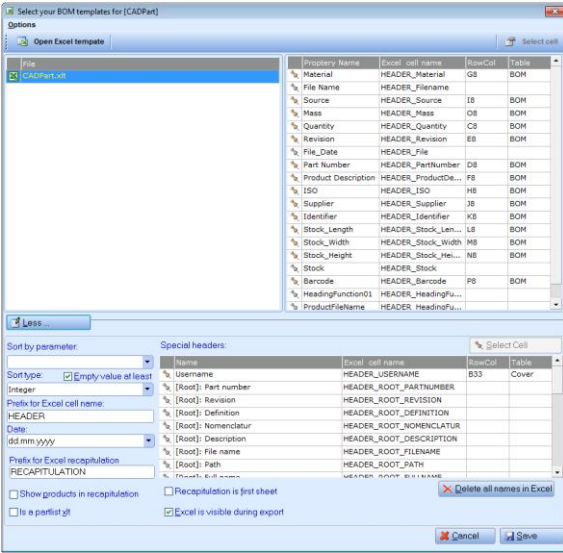
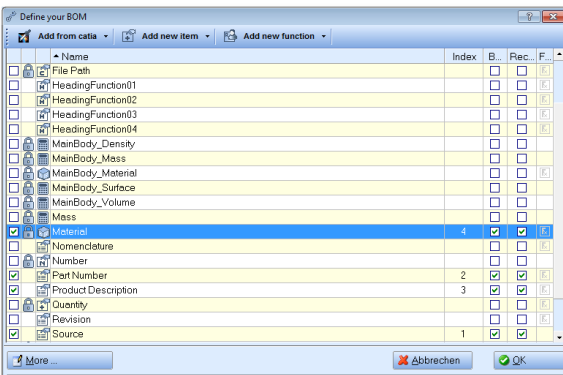
- Choose the predefined template
- Filling of values according to BOM template definition
- Detection of missing values (preview)
- Creation of BOM-exports in the supported data exchange formats

Highlights:

- Using of part / bodies or geometrical sets structures in BOMs identical to product / part structures
- Automatic calculation of technical parameters such as weight, volume, surface, density...
- Integration of CATIA Material catalog
- Creation of stock dimensions and geometry

Supported Data exchange formats:

- Excel, *.csv, *.html, *.txt
- Export to CATDrawing tables



CADPart
Hintergitzengweg 12
5101 Bergheim, Austria
T +43 664 226 01 20 | F +43 662 453 20 31
office@cadpart.com | www.cadpart.com



The BOM creation is very flexible. In this way customer-specific requirements can be implemented with a little effort. At any time later the structures can be easily adapted to changing needs. Many satisfied customers prove the extensive expertise of CATBOM in the BOM creation. We are constantly striving to develop applications further to provide you with high quality tools.

Ihr CADPart Team